

### Uncrating and setup for Artis Zeego Model

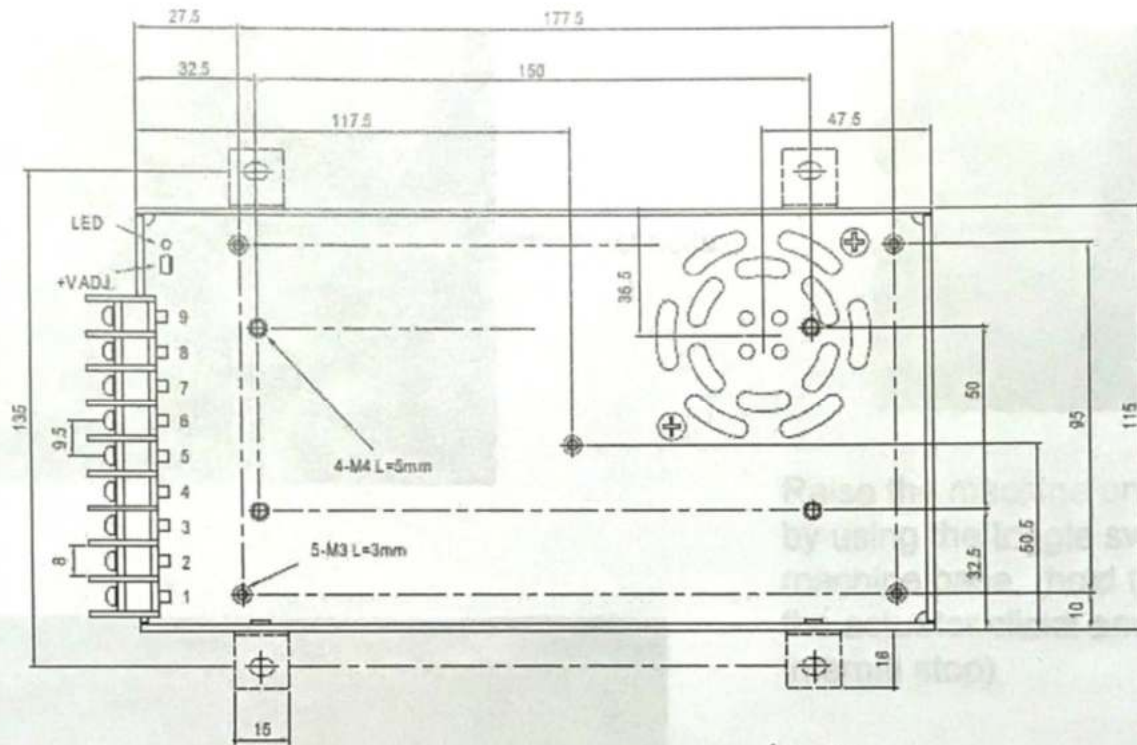


First of all you must use at least two people  
To open the door as it is heavy (maybe 50# each).

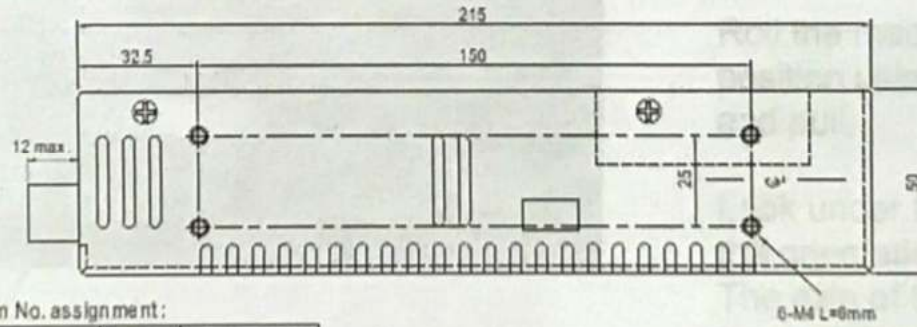
Next remove the C-arm cart from the rack and set it  
aside.

Remove the box of touch-up paint and set aside.  
Remove the C-arm shipping board by lifting the  
left end out of the notched board on the wall.

Now unbolt the shipping bracket from the floor only.  
(2, 1/2" socket head cap screws)



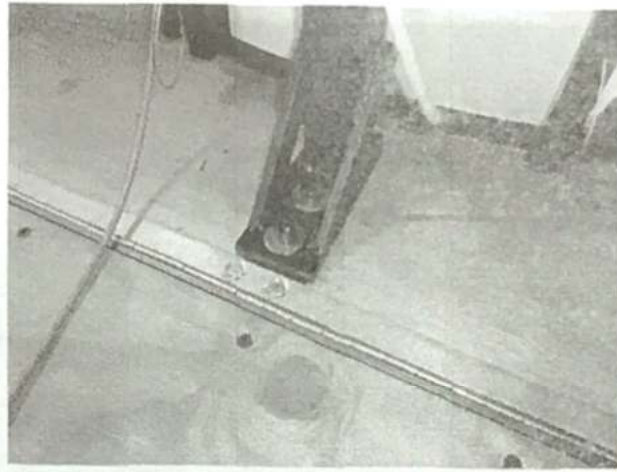
RAM/Load  
Toggle switch



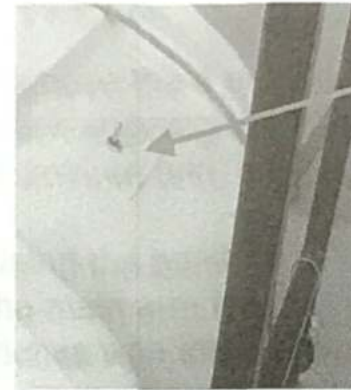
Terminal Pin No. assignment:

Pin No.	Assignment	Pin No.	Assignment
1	AC/L	4-6	DC OUTPUT -V
2	AC/N	7-9	DC OUTPUT +V
3	FG ↓		





1/2" bolts



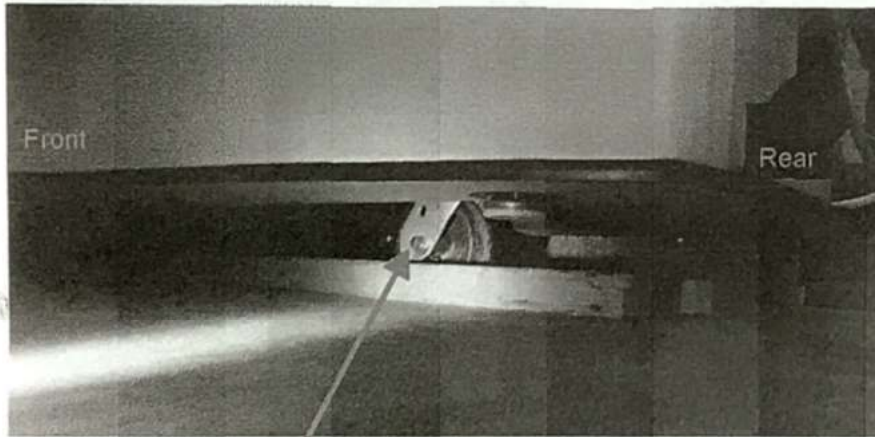
Raise/Lower  
Toggle switch

Raise the machine onto its casters by using the toggle switch on the machine base. (hold the switch until the actuator clicks and rattles at its internal stop)

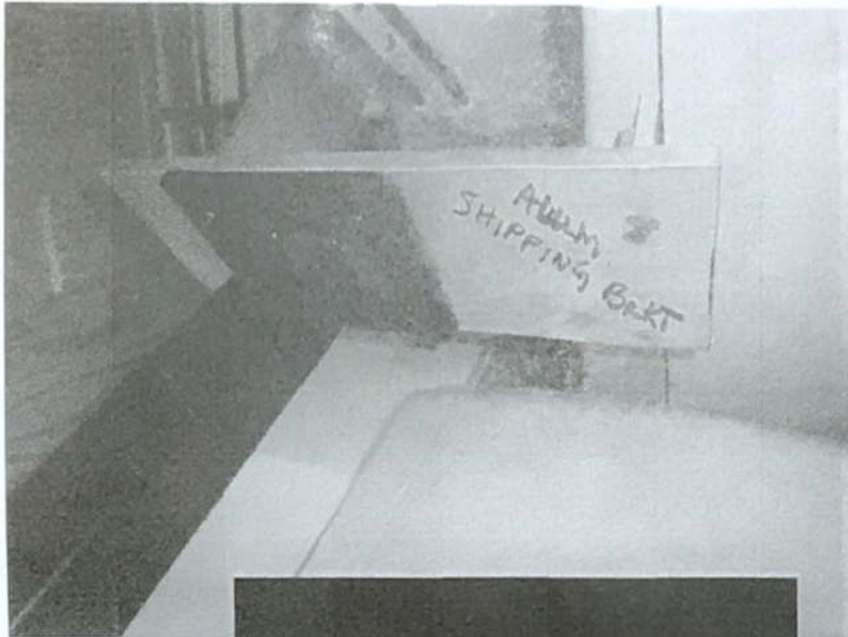
aluminum shipping  
brkt to the upper arms.

Roll the machine out of the crate and into position using the shipping bracket to push and pull.

Look under the machine base to see the orientation of the rear swivel caster. The axle of the caster has been moved from center and needs to be turned as shown for the lowering mechanism to work properly. Use the toggle switch to lower the machine.



Note caster bracket angles toward front.



## AFTER POSITIONING MACHINE

Remove the 4 bolts that tie the black shipping bracket to the aluminum brkt. on the machine.

Using the pendant control, move the main arm forward a couple inches with the **Center** switch only.

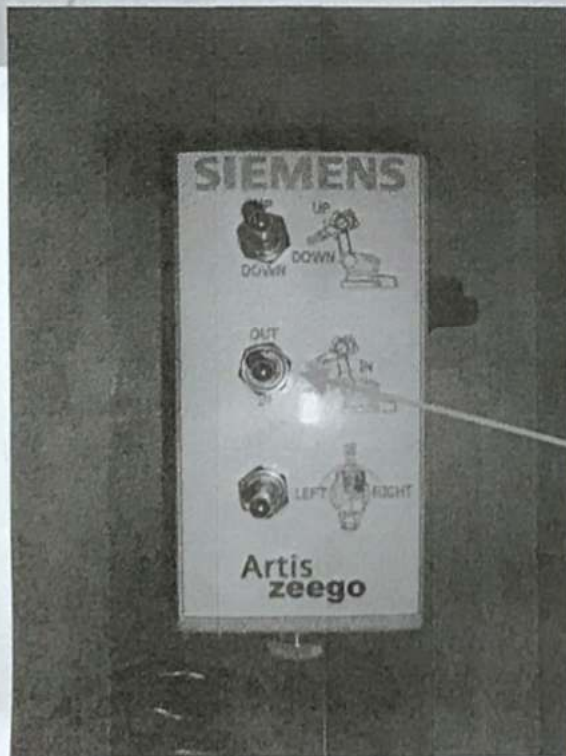
(OUT)

Remove the two threaded knobs at the base of the shipping brkt. and lift the bracket off.

BLACK

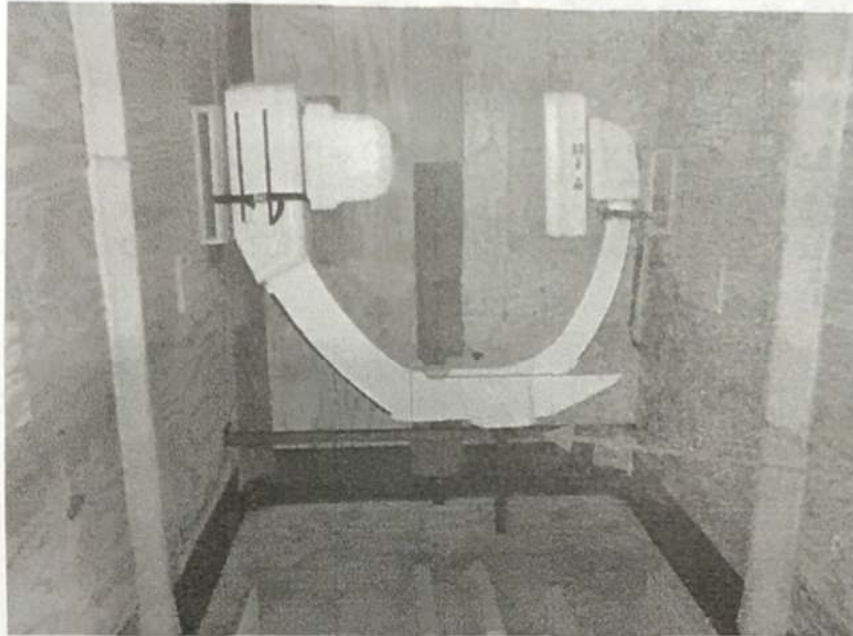
Carefully remove the 4 bolts that fasten the aluminum shipping brkt to the upper arms.

Use two people for these operations to prevent dropping anything on the machine.

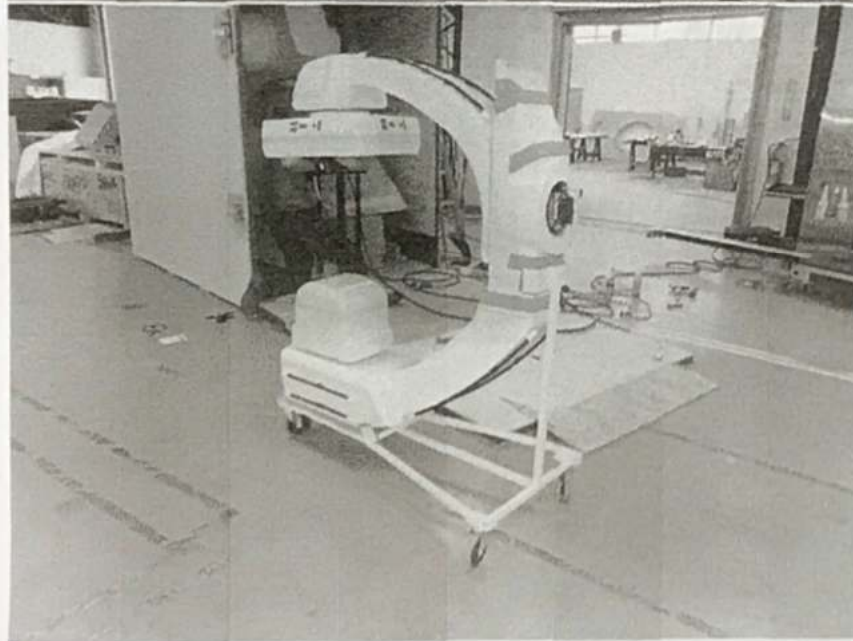


Main Arm toggle switch





5/16" screws in brkt.



Unclip the two straps securing the C-arm ends to the wall.

Remove the two screws underneath the C-arm that secure it to the metal frame. slide the unit out to disengage it from the bracket and lift it out. Again two people is best.

Set the C-arm onto the cart, large end down and tip back into the rest. Make certain the bottom is between the side locators.

To fasten the C-arm to the machine arm, align the square mounting plate to the bracket orientation. Place the bottom of the square plate into the fixed notch of the mounting bracket and pivot into place. Turn in the bracket knob to engage the adjustable plate.

To remove the C-arm, lift the arm to relieve the pressure on the mounting plate and bracket and unscrew the mounting knob to it's stop. If the C-arm does not come away freely lift the arm again to release the pressure on the adjustable plate, it should spring out of the way.



The pendant control has a speed adjustment on the right side. It works with all axis of motion and is especially nice for rotating the base.

**A word of caution:** Do not rotate the machine base past 45 degrees from center when the C-arm is attached or when the main arm is extended because the machine **will** tip. To demonstrate parking on the left, remove the C-arm and retract the main arms to their park positions first, then rotate left to the park position and reinstall the C-arm if desired.

Always use two people to adjust or reposition the C-arm, it is much easier.



## Storing the machine for shipment.

Remove the C-arm and place it on it's dolly.

Retract the main arms at full speed to the park positions.

Install the aluminum shipping brkt to the upper arms.

Rotate the machine to center.

Extend the main arm with the **center** switch a few inches.

Install the black shipping brkt into the locators in the base and install the two knobs to hold in it place.

Retract the main arm (**center** switch – full speed) to stop against black shipping brkt and bolt together.

Raise the machine using the toggle switch in the base.

Adjust the C-arm to its narrow configuration and tighten the slide stopper.

Install the C-arm into the shipping brkt at the front of the crate and bolt into place.

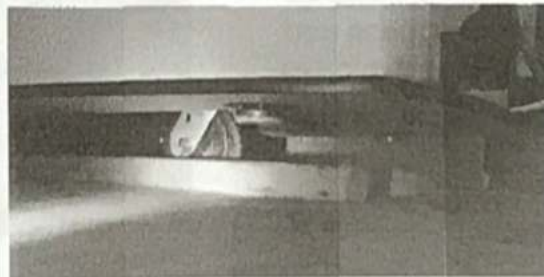
Fasten the strap around the large end of the C-arm.

Extend the small side of the C-arm out to rest against the adjacent padded surface and attach strap and tighten slide stopper.

Roll the machine into the crate keeping it centered until it bumps the padded stop at the front.

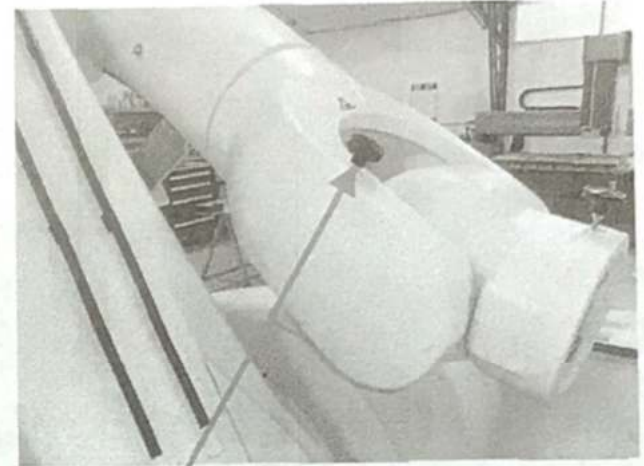
To help orient the swivel caster at the rear, slide the rear left or right about 2-3 inches and stop.

Start to lower the machine with the toggle switch and look to see if the rear wheel has oriented itself as shown in the picture.



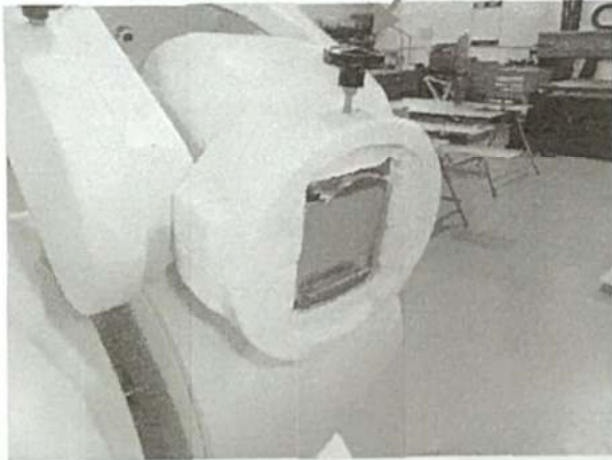


Axis lock for end of Upper arm.  
Tighten to stop.

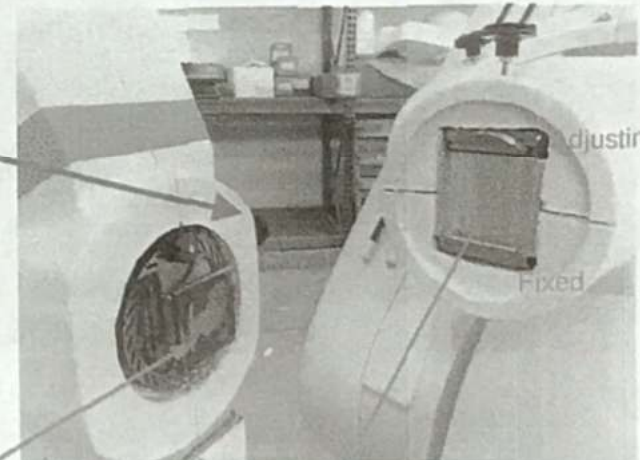


Axis lock for Knuckle.  
Tighten to stop.

C-arm attachment bracket knob.  
Loosen and tighten to stop.



C-arm rotation lock.  
**Caution** do not over tighten this knob.  
Use enough pressure to hold it in place.  
It does not get tight.



Mounting Plate

Mounting Bracket